

Thank You

Thanks for purchasing a PT-510 series pressure transmitter from us! We appreciate your business and your trust. Please take a moment to familiarize yourself with the product and this manual before installation. If you have any questions, at any time, don't hesitate to call us at 888-525-7300.

NOTE: Scan the appropriate QR code to the below to see the full user manual on your tablet or smartphone. Or visit www.apgsensors.com/support to find it on our website.



PT-510 & PT-510W User Manual

Table of Contents

1. Description	5. Dimensions	9. Repair Information
2. How To Read Your Label	6. Wiring Information	10. Removal Instructions
3. Warranty	7. Vent Tube Drying	
4. Mounting Instructions	8. General Care	

1 Description

PT-510/PT-510W series submersible pressure transmitters offer reliability in harsh industrial conditions. The small size, and all welded, all stainless steel body make the durable PT-510/PT-510W the perfect instrument for static and dynamic pressure measurement. The PT-510 comes with a Delrin nose cone, suitable for clean water use, while the PT-510W has a stainless steel cage for additional transducer protection in wastewater environments.

2 How To Read Your Label

Each label comes with a full model number, a part number, and a serial number. The model number for the PT-510 will look something like this:

▲ SAMPLE: PT-510-C-20-L01-60

The model number correlates with all the configurable options and tells you exactly what you have. Compare the model number to the options on the datasheet to identify your exact configuration. You can also call us with the model, part, or the serial number and we can help you.

The label also includes the pinout, as does this installation guide.

3 Warranty

This product is covered by APG's warranty to be free from defects in material and workmanship under normal use and service of the product for 24 months. For a full explanation of our Warranty, please visit <https://www.apgsensors.com/about-us/terms-conditions>. Contact Technical Support to receive a Return Material Authorization before shipping your product back.

Scan the QR code below to read the full explanation of our Warranty on your tablet or smartphone.



4 Mounting Instructions

Your PT-510/PT-510W series submersible pressure transducer is designed to be free-hanging.

PT-510 Series Pressure Transmitters

Installation Guide

PT-510 and PT-510W

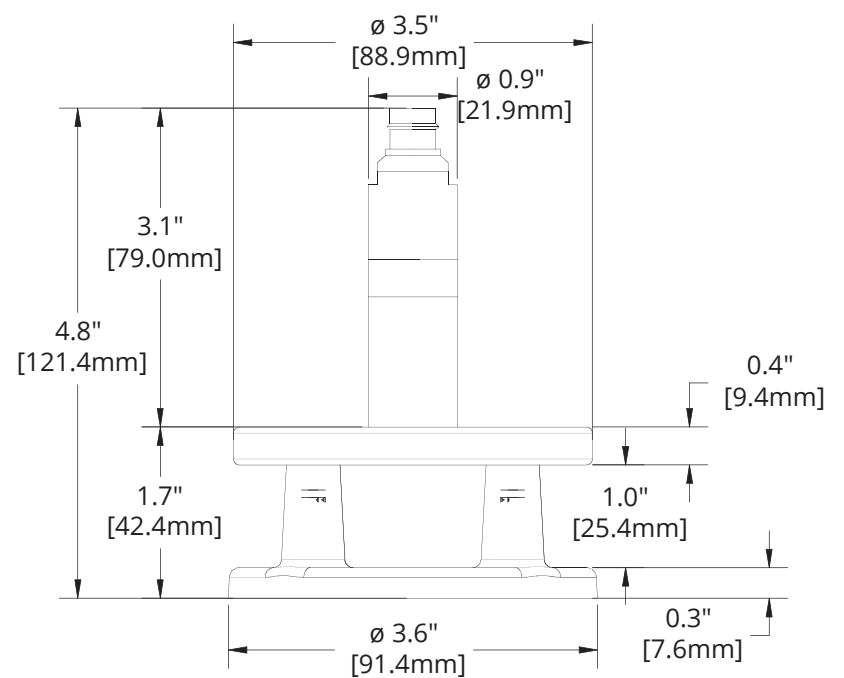
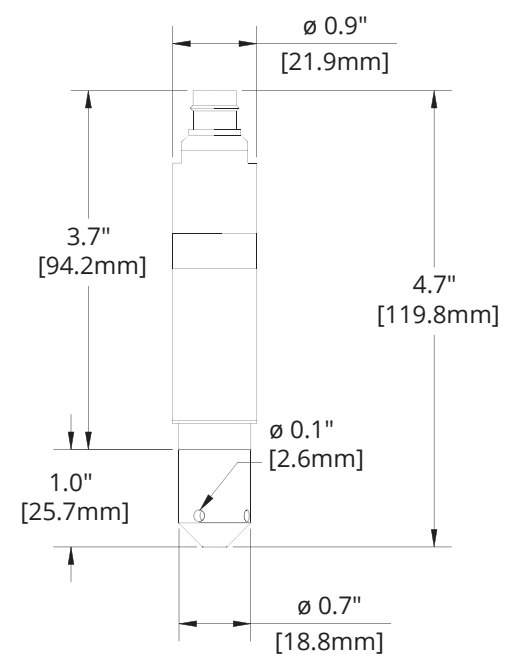


Automation Products Group, Inc.
1025 W 1700 N Logan, UT 84321

www.apgsensors.com | phone: 888-525-7300 | email: sales@apgsensors.com

Part # 122950-0038
Doc #9005032 Rev A

5 Dimensions



6 Wiring Information

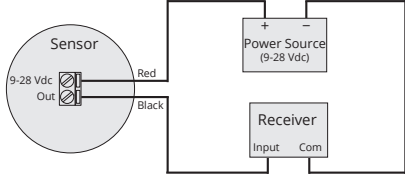
PT-510/PT-510W Series Pin Out Table

		4-20 mA
Pin	Red	+ Power/Signal
	White	- Power/Signal
	Green	Case Gnd

PT-510/PT-510W Series Supply Power Table

		4-20 mA
Power Supply		11-30 VDC

PT-500 4-20 mA System Wiring



7 Vent Tube Drying

Condensation in the vent tube can damage the electronics in your sensor, resulting in unreliable readings. APG offers two methods of preventing vent tube condensation: a venting cap and a desiccant drying cartridge.

The venting cap is a PVC tube with a hydrophobic patch that allows moisture to pass out of the tube without allowing water in. The cap is sealed by an o-ring, and is easily installed in the field.

The desiccant drying cartridge with vent tube adapter absorbs any moisture in the vent tube to keep vapor from condensing. The installation of the desiccant drying cartridge is quick and easy. Common installation methods are cable tie, Velcro, and cable clamps.

NOTE: Desiccant crystals change from blue to pink as they become saturated. Cartridge must be replaced when all crystals have saturated.

IMPORTANT: Do NOT use desiccant cartridge in the presence of vapors of liquids containing phosphate esters, synthetic lubricant, hydrocarbon solvents, methanol, acetone, lacquer solvents, or other organics.

8 General Care

Your pressure transmitter is very low maintenance and will need little care, as long as it was installed correctly. However, in general, you should:

- Avoid applications for which the sensor was not designed, such as extreme temperatures, contact with incompatible corrosive chemicals, or other damaging environments.
- Avoid touching the diaphragm. Contact with the diaphragm, especially with a tool, could permanently shift the output and ruin accuracy.
- Cleaning the diaphragm or the diaphragm bore should be done with extreme care. If using a tool is required, make sure it does not touch the diaphragm.

IMPORTANT: Any contact with the diaphragm can permanently damage the sensor. Use extreme caution.

9 Repair Information

If your pressure transmitter needs repair, contact us via email, phone, or on-line chat on our website. We will issue you an RMA number with instructions.

- Phone: 888-525-7300
- Email: sales@apgsensors.com
- Online chat at www.apgsensors.com

10 Removal Instructions

Removing your PT-510/PT-510W from service must be done with care. It's easy to damage your sensor if you are not careful to follow these guidelines:

- Retrieve the sensor from the vessel. Follow any and all procedures for safely isolating any media contained inside the line or vessel.
- Carefully clean the sensor's fitting and diaphragm of any debris (see General Care) and inspect for damage.
- Store your sensor in a dry place, at a temperature between -40° F and 180° F.